

NEWHAVEN - 7B - PHASE 2 AT ABACOA

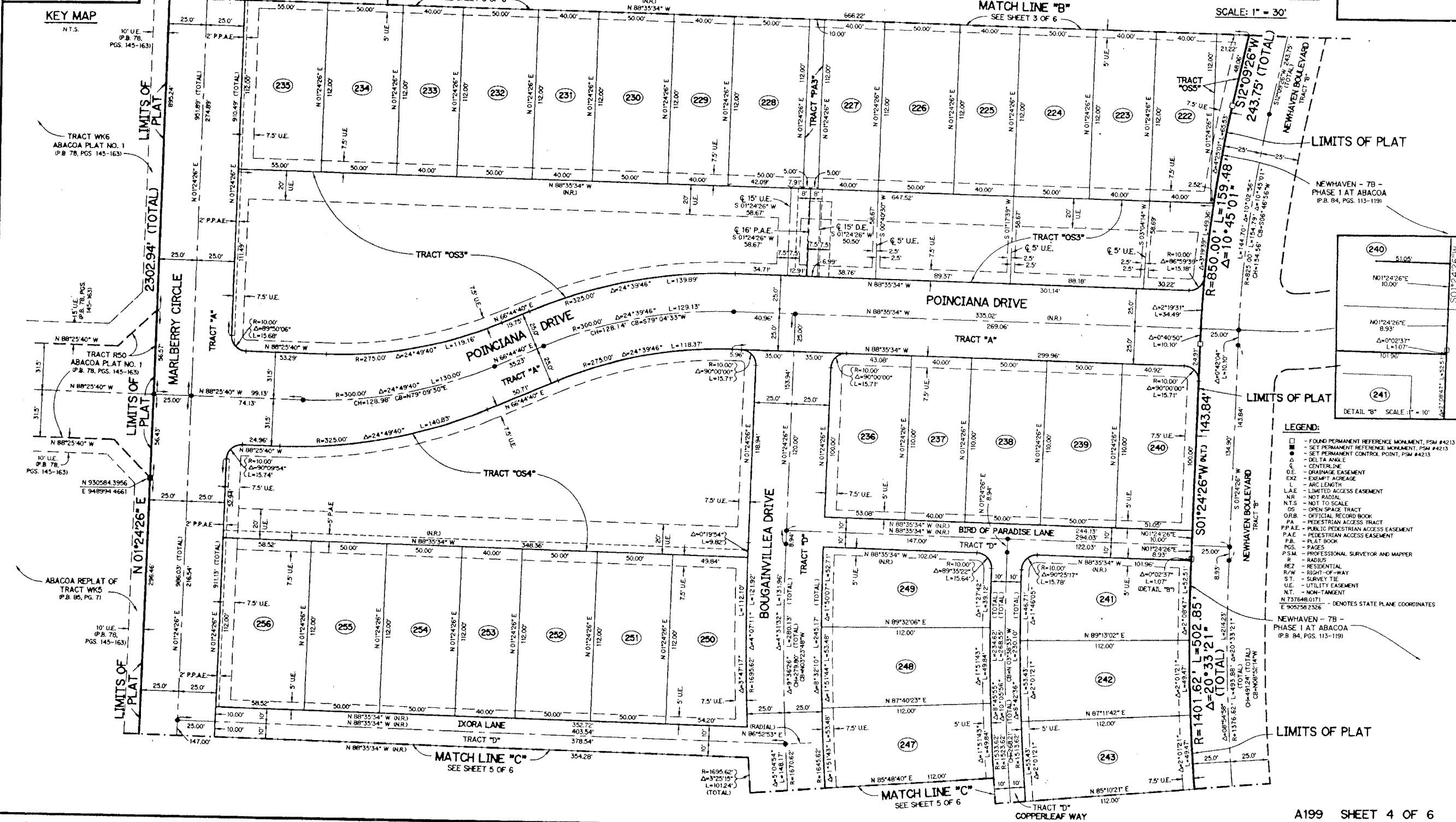
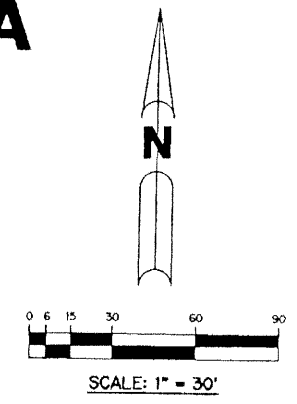
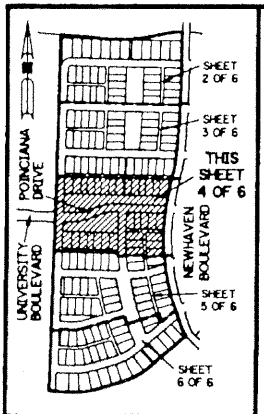
103

BEING A REPLAT OF A PORTION OF TRACT RN7B ACCORDING TO THE PLAT OF ABACOA PLAT NO. 1, AS RECORDED IN PLAT BOOK 78, PAGES 145 THROUGH 163, INCLUSIVE, OF THE PUBLIC RECORDS OF PALM BEACH COUNTY, FLORIDA.
 LYING IN SECTION 24, TOWNSHIP 41 SOUTH, RANGE 42 EAST, TOWN OF JUPITER, PALM BEACH COUNTY, FLORIDA

SHEET 4 OF 6 JULY, 2000

THIS INSTRUMENT PREPARED BY
 PERRY C. WHITE, P.S.M. 4213, STATE OF FLORIDA
 LAWSON, NOBLE AND WEBB, INC.
 ENGINEERS PLANNERS SURVEYORS
 420 COLUMBIA DRIVE
 WEST PALM BEACH, FLORIDA 33409
 LB-6674

NOTE:
 COORDINATES SHOWN ARE GRID COORDINATES
 DATUM = NAD 83 (1990 ADJUSTMENT)
 ZONE = FLORIDA EAST ZONE
 LINEAR UNIT = U.S. SURVEY FEET
 COORDINATE SYSTEM 1983 STATE PLANE
 TRANSVERSE MERCATOR PROJECTION
 ALL DISTANCES ARE GROUND
 SCALE FACTOR = 1.0000077
 N 89°21'00" E (PLAT BEARING)
 N 89°21'52" E (GRID BEARING)
 0°00'02" = BEARING ROTATION - COUNTER CLOCKWISE
 (PLAT TO GRID)



- LEGEND:**
- - FOUND PERMANENT REFERENCE MONUMENT, PSM #4213
 - - SET PERMANENT REFERENCE MONUMENT, PSM #4213
 - - SET PERMANENT CONTROL POINT, PSM #4213
 - Δ - DELTA ANGLE
 - C - CENTERLINE
 - D - DRAINAGE EASEMENT
 - EXZ - EXEMPT ACREAGE
 - L - ARC LENGTH
 - L.A.E. - LIMITED ACCESS EASEMENT
 - NR - NOT RADIAL
 - NTS - NOT TO SCALE
 - OS - OPEN SPACE TRACT
 - ORB - OFFICIAL RECORD BOOK
 - PA - PEDESTRIAN ACCESS TRACT
 - PP.A.E. - PUBLIC PEDESTRIAN ACCESS EASEMENT
 - P.A.E. - PEDESTRIAN ACCESS EASEMENT
 - P.B. - PLAT BOOK
 - POS - PAGES
 - P.S.M. - PROFESSIONAL SURVEYOR AND MAPPER
 - R - RADIUS
 - RES - RESIDENTIAL
 - R/W - RIGHT-OF-WAY
 - S.T. - SURVEY TIE
 - U.E. - UTILITY EASEMENT
 - N.T. - NON-TANGENT
 - N 737648.0171
E 905258.2326 - DENOTES STATE PLANE COORDINATES
 - NEWHAVEN - 7B - PHASE 1 AT ABACOA (P.B. 84, PGS. 113-119)

